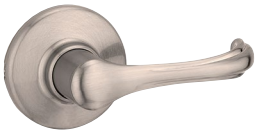


## ALFINI Box Pack Specifications



SATIN NICKEL

### AVAILABLE FUNCTIONS:



Passage



Privacy



Entry



Inactive

ALFINI

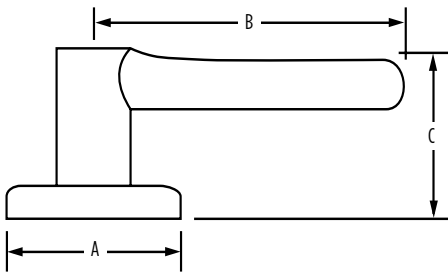
15  
Satin Nickel

Passage 20 Min	<input type="checkbox"/>
Privacy	<input type="checkbox"/>
Entry	<input type="checkbox"/>
Inactive	<input type="checkbox"/>



## SPECIFICATIONS

<b>Door Prep</b>	Cross Bore 2-1/8" Edge Bore 1" Latch Face 1" x 2-1/4"
<b>Backset</b>	Adjustable to 2-3/8" or 2-3/4"
<b>Door Thickness</b>	1-3/8" - 1-3/4" doors standard. 2-1/4" doors optional`
<b>Cylinder</b>	SmartKey
<b>Faceplates</b>	1" x 2 1/4" Includes square corner, radius corner and drive-in
<b>Strikes</b>	2-1/4" full lip. Includes square corner, radius corner and drive-in
<b>Bolt</b>	1" throw
<b>Door Handing</b>	Reversible for right or left-handed doors
<b>ANSI/BHMA</b>	A156.5 Grade 3
<b>ADA</b>	Interior turn piece meets 4.13.9 ADA requirements
<b>ASTM</b>	All Weiser product meets ASTM E 331 water penetration testing



Dimensions	A	B	C	C (Keyed)
Alfini	2 5/8"	3 3/4"	2 1/4"	2 5/8"

## WARRANTY:

Weiser™ products provide a "Lifetime Mechanical Warranty" that covers all defects in material and workmanship. For more information, please visit [ca.weiserlock.com/en/warranty/](http://ca.weiserlock.com/en/warranty/).